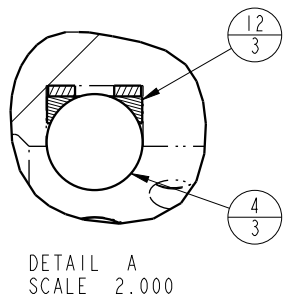
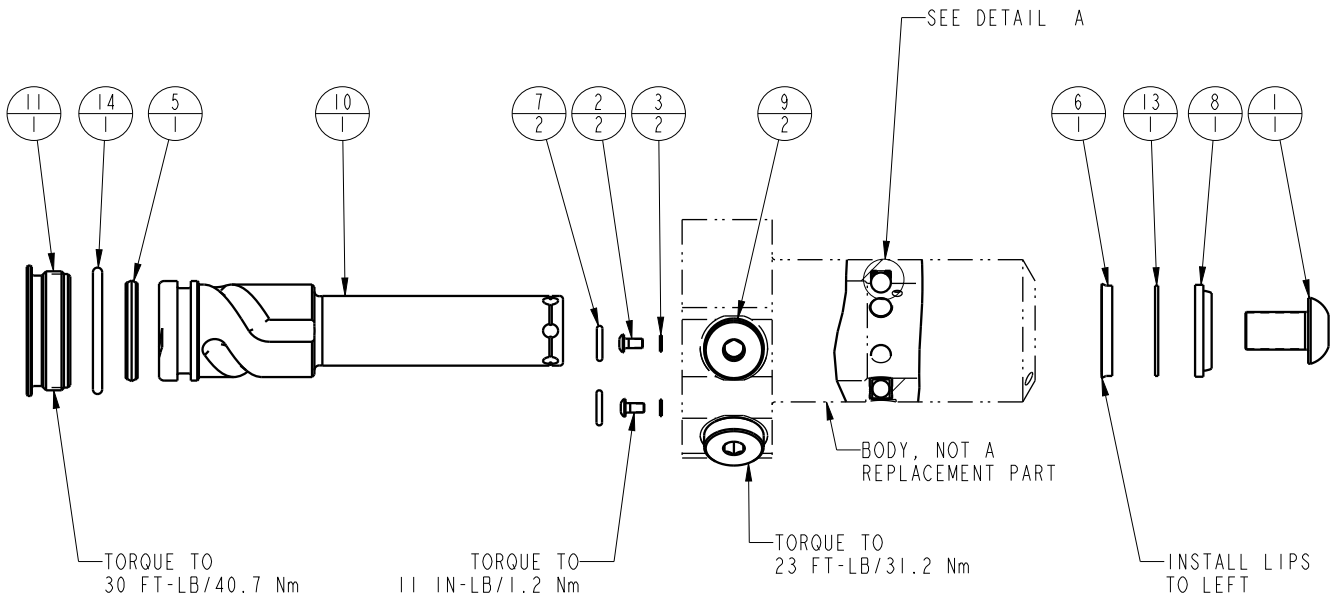


# Prefix-000010-Suffix

NO	QTY	PART NO	DESCRIPTION	STD SEAL KIT	FKM SEAL KIT
1	1	21500010	SCREW, CAP, BTNH, M12 X 20, ALY		
2	2	21500019	SCREW, CAP, BTNH, M3 X 6, ALY		
3	2	21500200	WASHER		
4	3	23600002	BALL, STEEL, ALLOY, .250	X	X
5	1	39011030	SEAL,CROWN,1-1/16x1-1/4x5/32	X	39V11030
6	1	39011046	SEAL,BEVEL W/HEEL INSERT,7/8 x1/8 x1 1/8	X	39V11046
7	2	39050042	O-RING, (-011)	X	39051025
8	1	39053000	WIPER,SNAP-IN, (7/8)	X	X
9	2	43068006	PLUG, PORT, HOLLOW HEX, G1/4		
10	1	47511304	PLUNGER,SC,HS,11.6KN,RH		
11	1	81400030	RETAINER,SC,HS,2600		
12	3	90199958	ASSY,BALLSEAT,SC,2600/5000	X	X
13	1	39F54002	BU RING, (-212 CUSTOM)	X	X
14	1	39V51043	O-RING, (-918)	X	X
N/A	N/A	60414504	KIT, SEAL, STANDARD		
N/A	N/A	6V414504	KIT, SEAL, FKM		



<b>PARTS LIST</b>	
	VEKTEK, INC. 1334 E. SIXTH AVE. P.O. BOX 625 EMPORIA, KS. 66801 U.S.A.
ASSEMBLIES AFFECTED	PARTS LIST, ASSY,SC,BF,TC,11.6KN,DA,RH
41421121	
41421121F	
SIZE A	MPL1440
REV E	

E	5877	RELEASE	JDW	01/21/26
REV	IN ACCORDANCE WITH ECN	EFFECTIVE DATE	REVISED BY	DATE
DRW BY:	JDW	DRAWING STATUS: <b>Released</b>		
DATE:	03/21/13	PRODUCTION APPROVED FOR RELEASED STATUS ONLY		

SHEET 1 OF 1